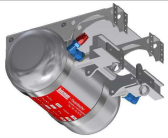


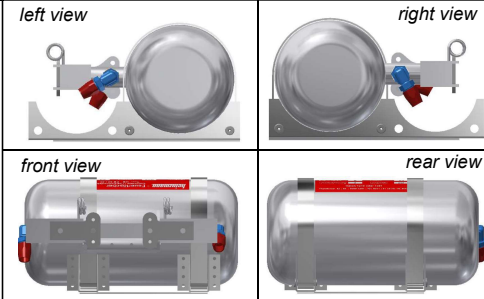
**-Fire extinguisher -**  
**Porsche 956**



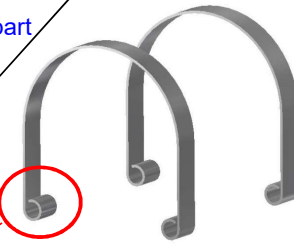
**MFH building step 3:** replaces MFH part (unlabeled)  
When installing do not use MFH RE22 (Spare Seat)

- 1) Mount the straps „6” to etch parts „2” and „1” first
- 2) glue the bottle (M1) into place)
- 3) mount the activation unit
- 4) wiring

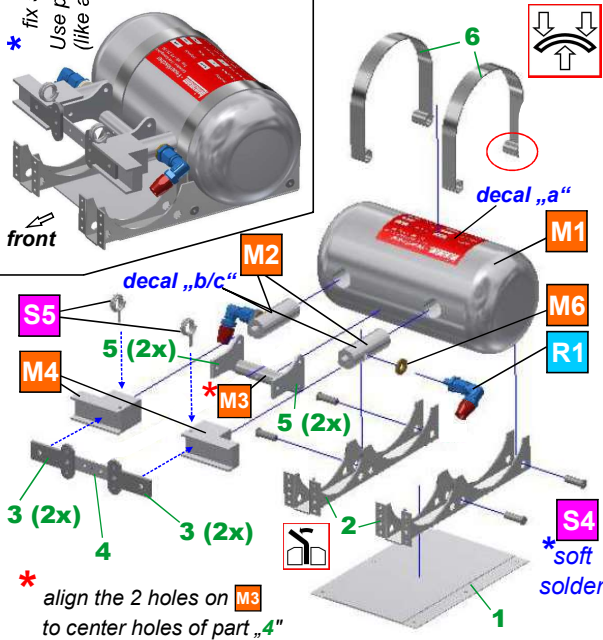
\* fix straps „6” to „2” with softsolder.  
Use plier to carefully press the edges.  
(like a rivet)



glue / solder 2x etch part „3” and „5” together before mounting



Bend mounting straps as shown.  
Use a 1mm rod (or drill) to bend the loops.  
Dry fit with M1 and mounting points on „2”

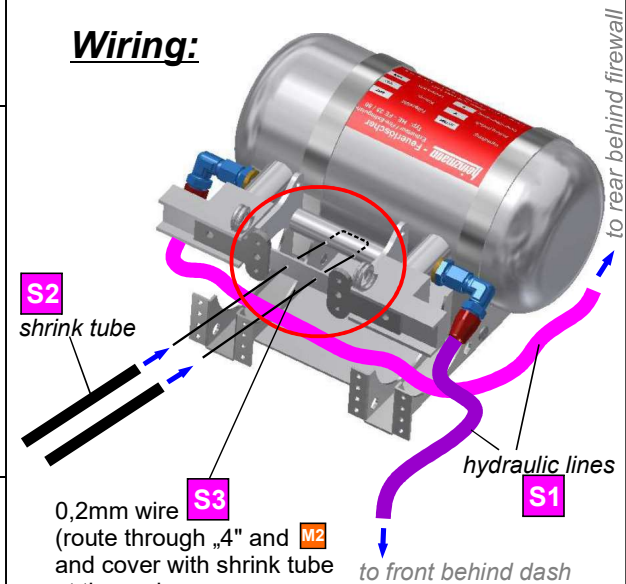


Floor sheet (mount on floor between fire-extinguisher and firewall)



view from top-left side to passenger area

**Wiring:**



0,2mm wire (route through „4” and M2 and cover with shrink tube at the ends.  
Route shrink tubes under dash

Mount unit of floor (MFH M309 & M31)